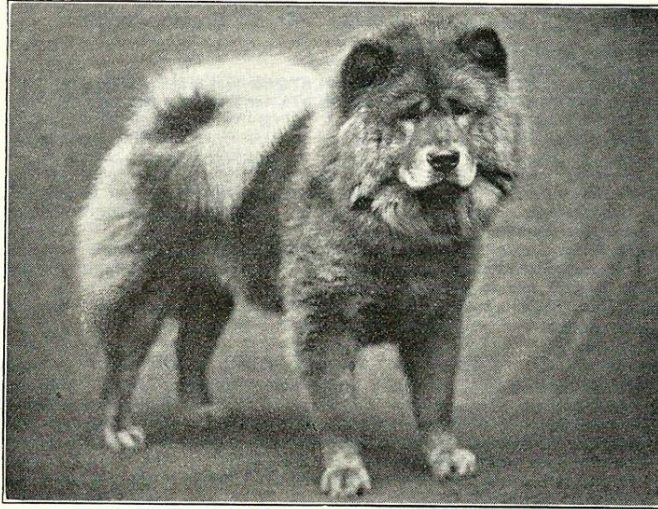


THE CHOW CHOW



CHAMPION CHOONAM BRILLIANTINA, K.C.S.B. No. 305 EE.
Born March 15th, 1924. By Champion Akbar, ex Ashvale Chop Chop.

The property of the Breeder-Owner—

Mrs. V. A. M. MANNOOCH,
27 Chester Terrace, Eaton Square, London, S.W.1,
and
Hill Cottage, Chalfont Common, Chalfont St. Peter, Bucks.

This Chow Chow bitch was first shown in February, 1925, as a puppy, and within the year has been shown at fourteen shows. At these shows under different judges she has won five Challenge Certificates and has six times been reserve for this honour. She gained her Challenge Certificates at the L.K.A., May, 1925; Royal Show, July, 1925; the Kennel Club Show, October; Scottish Kennel Club Show, October; Birmingham, December, 1925; and Reserve Championships at Manchester, March, 1925; Ranelagh, May, 1925; Taunton, June, 1925; Brighton, September, 1925; Maidstone, September, 1925; Bristol, December, 1925; in addition to this she has won 86 other prizes at these Shows. She is a litter sister to the famous International Champion Choonam Brilliantine, whom she greatly resembles.

DESCRIPTION OF THE CHOW CHOW.

FEW dogs have greater individuality than the Chow Chow. His interest in mankind being restricted to the inmates of his own house, he cannot be termed sociable. There is a quiet dignity about his nature which makes one respect him, but he is not the friend of all men, as most of the spaniels are. His peculiarities extend to his physical characteristics, the black tongue being distinctive. The breed is hardy and long-lived. When most other dogs are declining in years, the Chow is at his best. He is compact, short-coupled and powerful for his weight, which is usually between 40lb. and 50lb. The head has a blunt appearance, the muzzle, of moderate length, being broad, instead of pointed like that of a fox. The skull is flat and broad, surmounted by small, pointed, erect ears, that are placed well forward. This placement helps to give the scowling expression that is so much desired. Chest broad and deep; back short, straight and strong; loins powerful. Forelegs perfectly straight with heavy bone. Feet small and cat-like. In the hindlegs the hocks are straight. The abundant coat is dense, straight and rather coarse to the touch, with a woolly undercoat. The colours are very attractive, being whole-coloured, black, red, yellow, blue or white. On the reds the feathering at the back is often lighter in shade. Good blues are much in demand at high prices. The tail is curled, and carried well over the back.