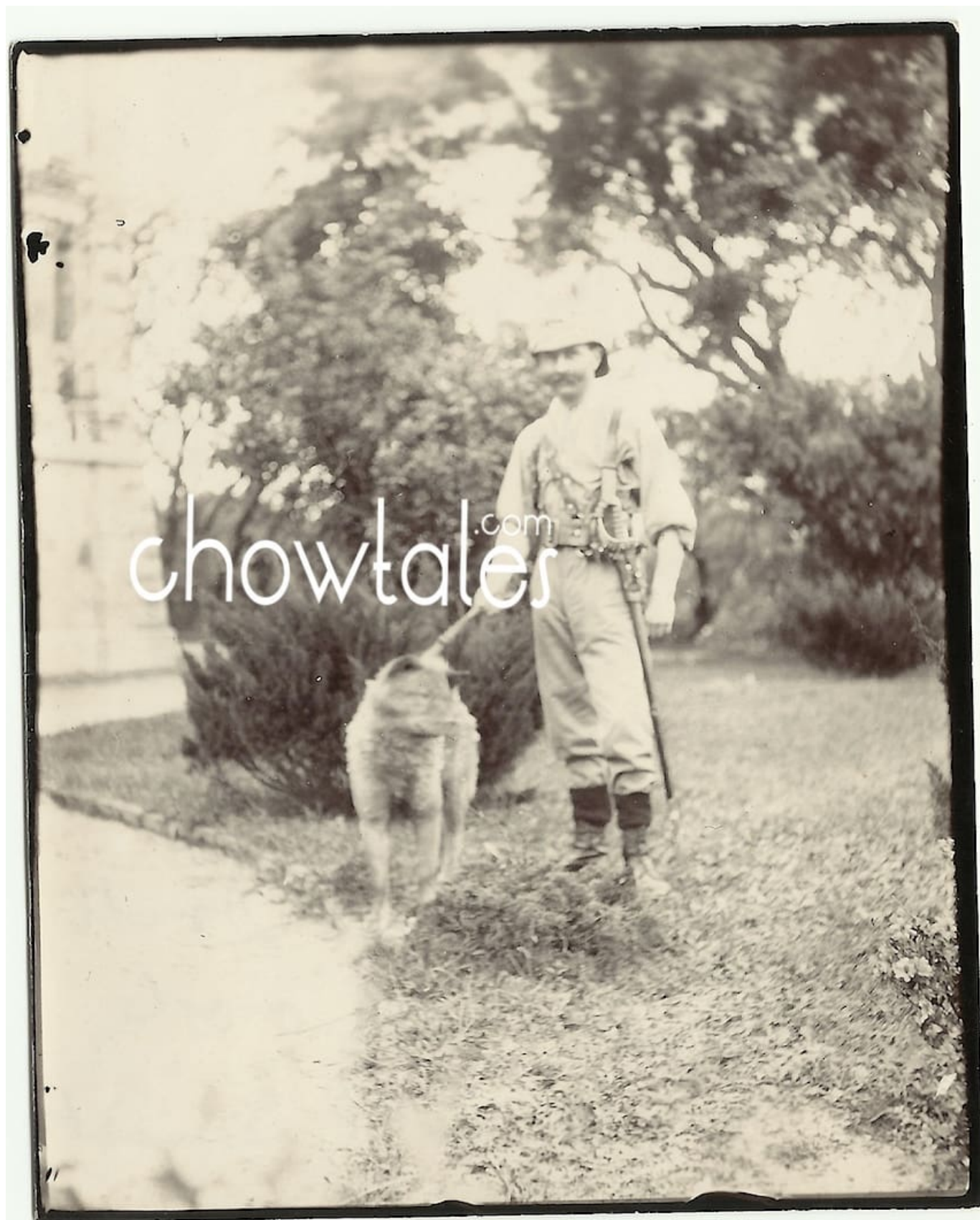


**THE PALACE CHOW – Was this  
Queen Victoria or Alexandra's  
chow?**



THE PALACE CHOW written on the photo back  
1897 Image restored by Sandra Miller  
The original is in the ©Wendy Saunier Collection

Before I get into the importance of this incredible photo I want to first thank Wendy Saunier of Moonbear Chows for her generous donation of this image to the Chowtales archives and to Love Banghart (Rebelrun Chows) for providing the lead to Wendy. This image above (original is below) could very well be the only photo of the often mentioned albeit never seen, Chow of Queen Victoria or possibly Queen Alexandra's chow "Plumpie" who I have written about at [THIS LINK](#) "Plumpie" bears a\_ remarkable likeness to the "Palace Chow" and the dates coincide with both Victoria's reign and Alexandras time at the palace as Princess, beginning in 1863.



THE PALACE CHOW written on the photo back. This is the original scan

This rare photograph is in the ©Wendy Saunier Collection

It was important for me to bring out the details in the restored version to get a closer look, but it is of equal importance for archival sake to display the original, just as it was sent to me. Below you will find the writing on the back of the photograph

**The top part easily reads – THE TENANT WITH THE  
PALACE CHOW DOG**

WHICH BELOW WENDY TRANSCRIBES THE BEST SHE COULD MAKE OUT

***“I cannot make out the second part of the words on the back. I believe it refers to Dress,(for)? November weather--cool but not --?” ~Wendy Saunier***

SINCE PUBLISHING THIS ARTICLE MY GOOD FRIEND JAN LOCKHART GAVE  
HER INTERPRETATION OF THE LAST PART OF THE TEXT

***“Some of the bottom part of the notation on the reverse of the original is, “Dress for warm weather drill order.” I can’t get the last word, either. (Perhaps my military background helped with something.)”~Jan Lockhart***

UPDATE APRIL 14, 2017- JUDITH-ANN ROBERTSON CONTACTS ME WITH  
WHAT IS MOST LIKELY THE CORRECT INTERPRETATION

Hi Miz Sandra, Doing some research for an lecture on Chow history and was looking at the Palace Chow page – here’s my translation of the inscription (military family): The Tenant with the Palace Chow Dog Dress – hot weather Drill order, cool but not smart. Here, smart meaning stylish, fashionable, elegant...

Judith Ann



chowtales.com

The Ten and  
with the  
Palace  
chow dog

---

Drum Hot  
weather Drill  
order, Cook  
but not smart

BELOW: Queen Victoria had a great passion for dogs and pets of all kinds. There is little information on her chows other than numerous articles referring to several Chows were "housed in London Zoo in the Wild Dog area and in 1865 Queen Victoria was presented with some Chows which were kept in cages at Windsor." Queen Victoria passed in 1901, so if this "Palace Chow" was indeed one of her pets, it would have been late in her life as the photo is dated 1897.



**QUEEN VICTORIA AND SHARP THE BORDER COLLIE 1867**





This beautiful image above is of Queen Alexandra of England posing with her dogs which includes "Plumpie" the chow. Circa 1880's-1920. Actual date of photo unknown-Library of Congress

CLICK PHOTO TO ACCESS THE FULL ARTICLE I WROTE ABOUT QUEEN ALEXANDRA'S CHOW

ABOVE: As for the important dates for Queen Alexandra, in 1863 she married Albert Edward, Prince of Wales and she reigned as Princess of Wales from 1863-1901, the longest time anyone held that title. When Queen Victoria died in 1901, Albert Edward became King Edward VII, and Alexandra his queen-empress from 1901 to 1910.

My best guess from the information I have at this point is that THE PALACE CHOW photo, is most likely a chow that resided at the royal palace, and I am leaning toward the possibility that this could be "Plumpie". Why? Take a look at the dog's jawline, eyes and ear placement. They are very distinctive and the dates fall right in line with the last photo in the Plumpie article (see below) dated 1892, The



PALACE CHOW photo is dated 5 years after that. With documentation in my archives of chow lifespans reaching 15 years or more back then, it is a good possibility.



1892 mourning for Prince Albert Victor "Eddy" [CLICK PHOTO FOR REST OF PLUMPIE ARTICLE](#)

BELOW- THIS ARTICLE WOULD NOT BE COMPLETE WITHOUT MENTIONING  
THE QUEEN VICTORIA TEDDY BEAR LEGEND- Source Charlotte Wilcox  
THE CHOW CHOW

---

## **The Teddy Bear Legend**

Some people say the Chow Chow has a face like a teddy bear. A legend says the first teddy bear was made to look like a Chow Chow. No one knows if this story from the past is true.

In the 1800s, Queen Victoria of England had a Chow Chow puppy. She took it everywhere she went. Some of the queen's friends did not like the dog. They thought a queen should not carry around a dog.

The queen's friends paid a dressmaker to make a stuffed Chow Chow. This toy looked just like the queen's puppy. People thought the toy Chow Chow looked like a bear. Other dressmakers began making them. They called them teddy bears.

Most people believe a different teddy bear story. They think that teddy bears were named after Theodore Roosevelt. Roosevelt's nickname was Teddy. He was president of the United States from 1901 to 1909.

This is ongoing research so I will be updating this article as I find anything new and I welcome all additions or corrections with documentation to keep the archives as accurate as possible.

IF ANYONE HAS ANY MORE INFORMATION THAT PERTAINS TO THIS TOPIC  
I WOULD LOVE TO HEAR FROM YOU . CONTACT ME AT  
[studio@sandramiller.com](mailto:studio@sandramiller.com)