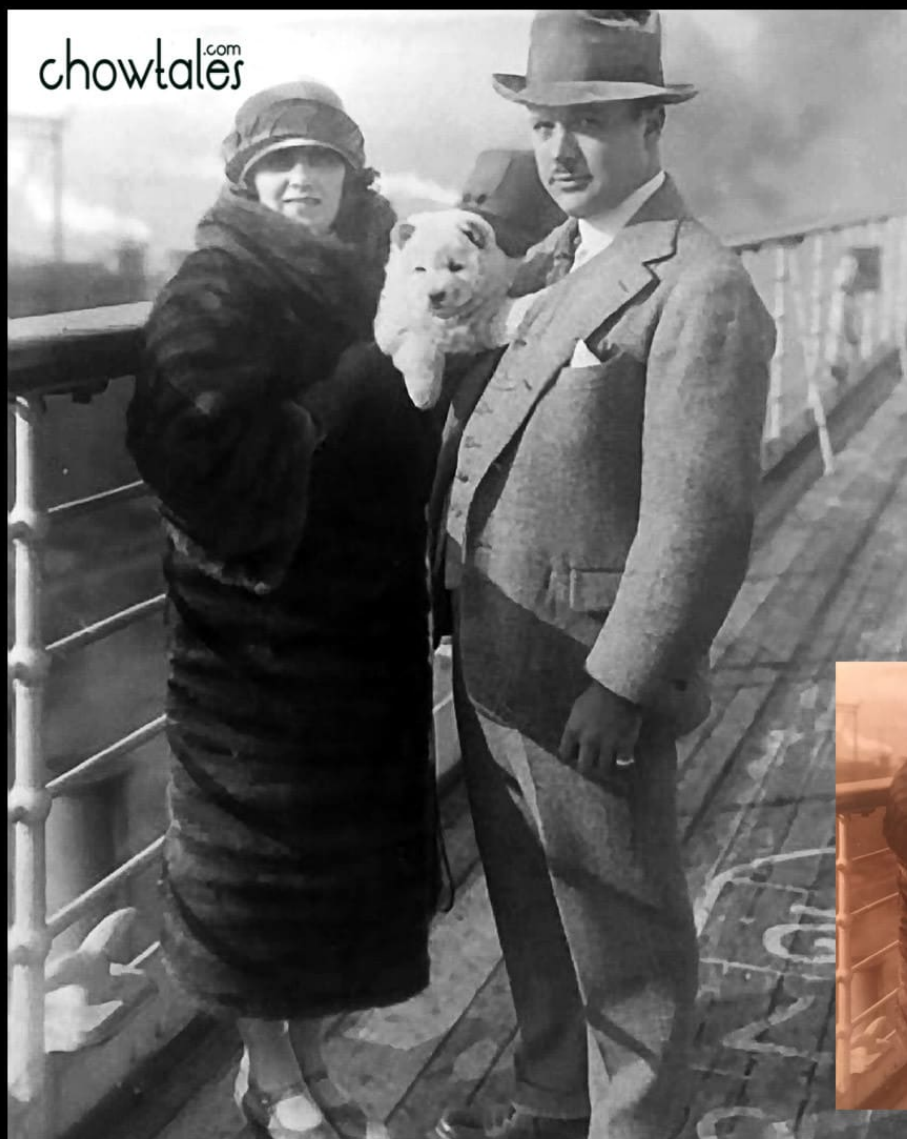


A special treasure from the Far East Kennels Zifferer family

Lothar Zifferer of Far East Kennels with his wife, aboard the Queen Elizabeth (or Mary) with a rare white/cream chow puppy. This photo is most likely from the 1920's



Thank you so very much Graham Zifferer for sharing this exquisite image of your great grandfather with the ChowTales archive!

I restored the photo for your family records as a heartfelt thank you!



Original photo in the private collection of Graham Zifferer ©

I am continually amazed at the incredible “gifts” that keep surfacing about our beloved breed, thanks to enthusiasts, collectors, and friends. The extremely RARE occasion that I make a connection with the actual family member of a pioneer Chow breeder is like winning the lottery for me as an

archivist. To have these first-hand accounts and images so generously shared by family, almost 100 years later...there are no words.

This photo is in the private collection of Graham Zifferer who introduced himself to me in a private message on ChowTales Facebook. Graham is the great-grandson of the founder of [FAR EAST KENNELS](#), Lothar Zifferer. Who can forget the article about this stately "temple" of the chows in Columbia PA, USA.

The photo that Graham sent to me from his family collection goes hand in hand with the photo below that I found in the newspaper. This is another very important piece of the puzzle!!

I restored the photo for Graham to bring out the details (SURPRISE!!!!) and will send him the full resolution image for his family records. I can't thank you enough Graham...and it makes me feel so good that generations later there is someone who is truly interested in preserving this important family legacy.



CIRCA 1925

Mrs Zifferer of the famous Far East chow kennels is pictured on the human interest page in the paper returning from Europe with her newest white chow puppy

The Zifferer's were some of the first in America to breed and market an almost pure white strain of chows.

chowtales.com



FAR EAST KENNELS ON LINCOLN HIGHWAY

Within the last year L. R. Zifferer's palatial establishment for the breeding and raising of chows has become one of the many sights to interest the tourist as he passes through Columbia, Pennsylvania

Restored 1920's image from the ©Sandra Miller Collection