

Prince Edward and Princess Alexandra with “Mouff”



Circa 1940 Prince Edward hugs his pet chow "Mouff" while his sister Princess Alexandra looks on, on the occasion of celebrating his fifth Birthday at the Duke's home
From the private collection of ©Sandra Miller Collection

What a precious photo this is!! I have a number of photos of The Prince and Princess with this charming chow which I will

be adding to this page as I get them scanned in . This particular image is an original 1940's 8x10 photo I acquired with all the info written on the back. Such a treasure trove of Royal and Chow history all in one photo.

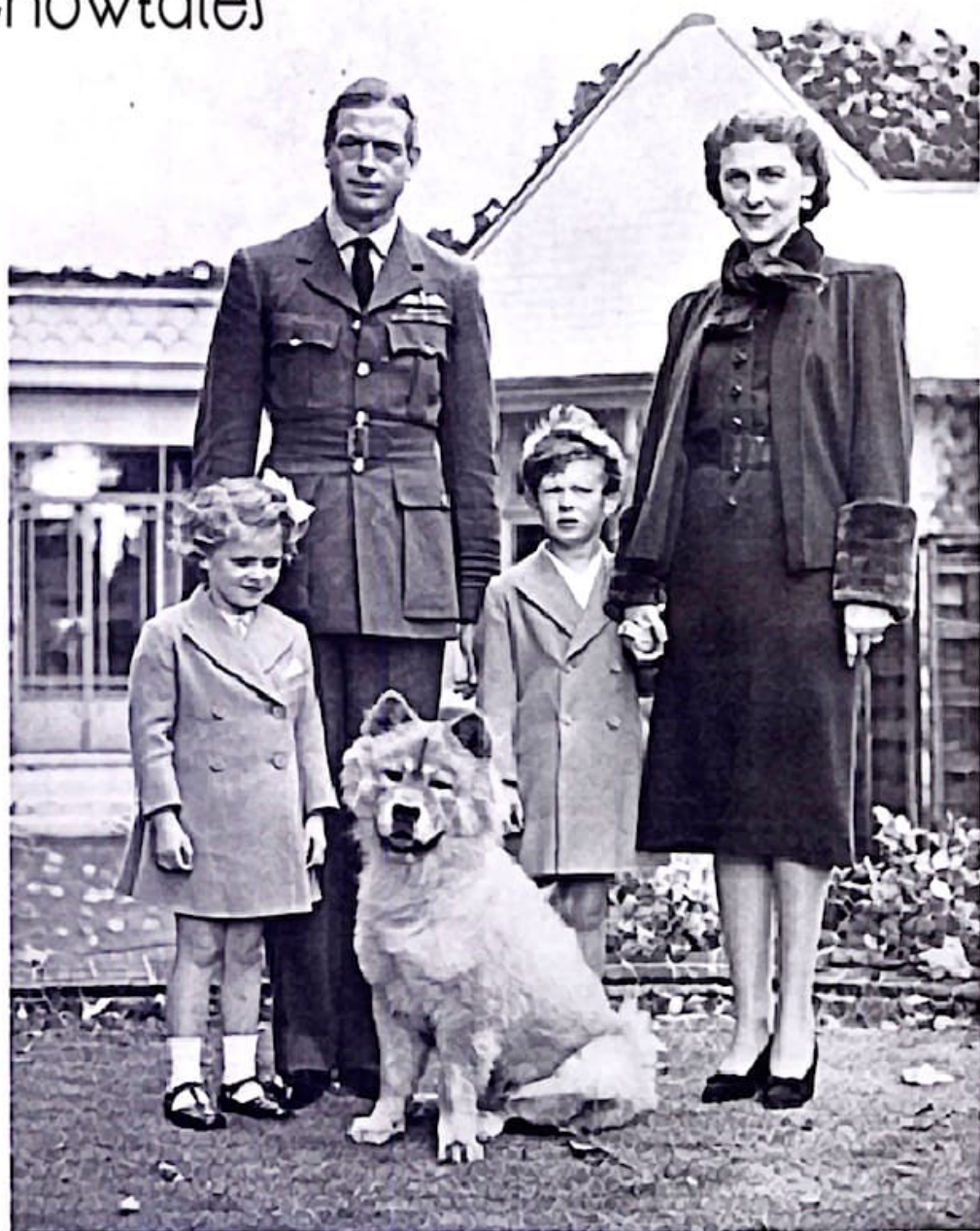
The image below was also from 1940 and I would imagine taken at the same time as the above photo as they are wearing the same clothing

COUNTRY LIFE

SATURDAY, NOVEMBER 30th, 1940

VOL. LXXXVIII. No. 2297

chowtales.com

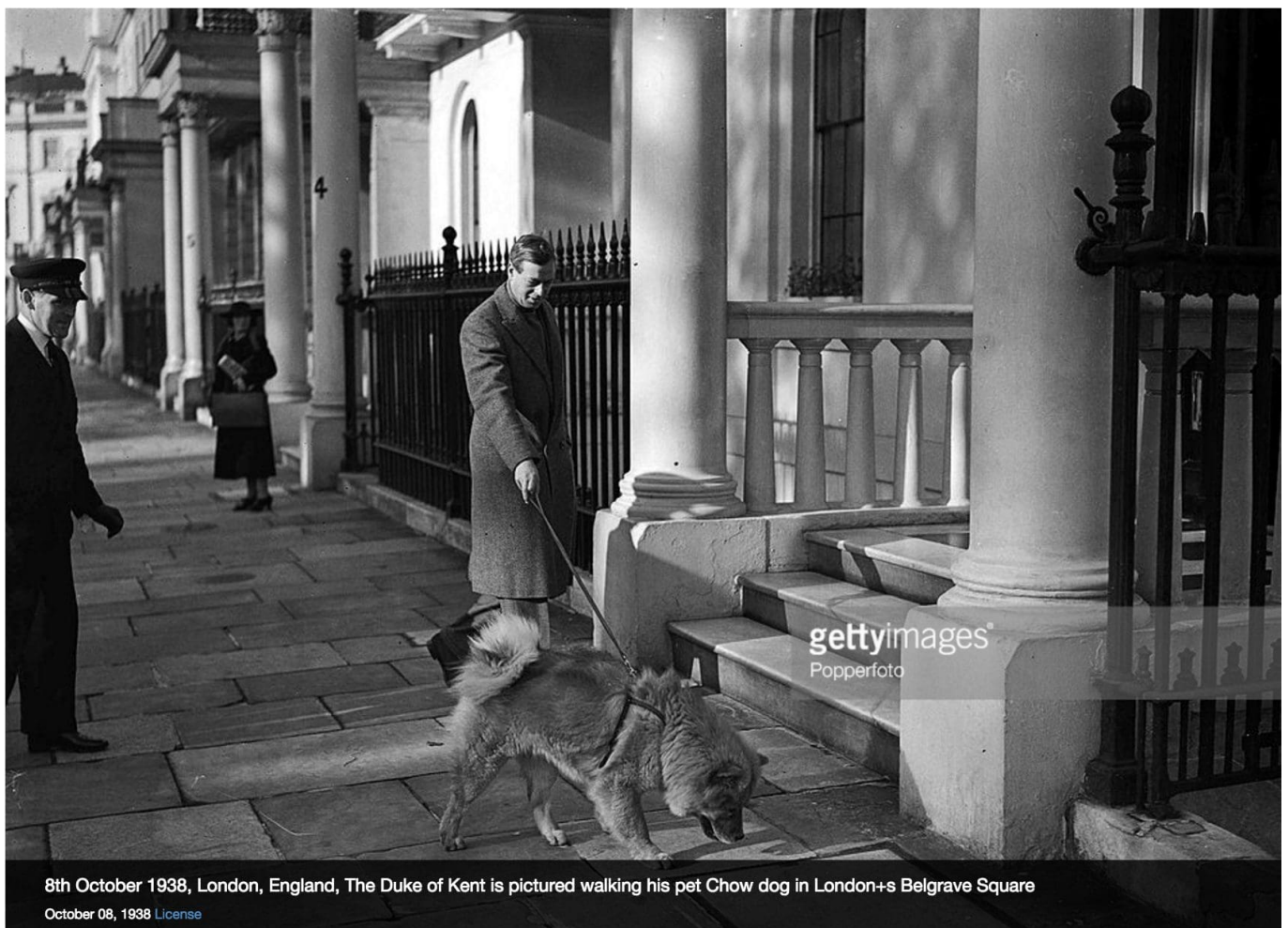


T.R.H. THE DUKE AND DUCHESS OF KENT, WITH PRINCE EDWARD AND PRINCESS ALEXANDRA AND THEIR DOG MOUFF

A recent photograph taken at their Buckinghamshire home

The Duke of Kent (late father of the present Duke) gifted his daughter, Princess Alexandra, first cousin to the Queen, a superb chow chow, who boasted the elegant pedigree name of Choonam Li Wu T'song, but was always called by the young princess by it's pet name Mouff (pronounced Muff)

source: Pets by Royal Appointment: The Royal Family and their Animals by Brian Hoey



8th October 1938, London, England, The Duke of Kent is pictured walking his pet Chow dog in London's Belgrave Square
October 08, 1938 [License](#)

Embed from Getty Images



"MUFF"

The Pet of T.R.H. The Duke and Duchess of Kent.

Specially drawn by the gracious permission of H.R.H. The Duke of Kent.

1930's Artwork of T.R.H. pet chow Muff (Mouff) by Cecil Francis Wardle
From the private ©Sandra Miller Collection

chowtales.com



The late Duke of Kent, the present Duke and Princess Alexandra with their Choonam Chow in 1938.

Circa 1938 – The Royal Family with their Choonam Chow “Mouff”
From the ©Sandra Miller Collection

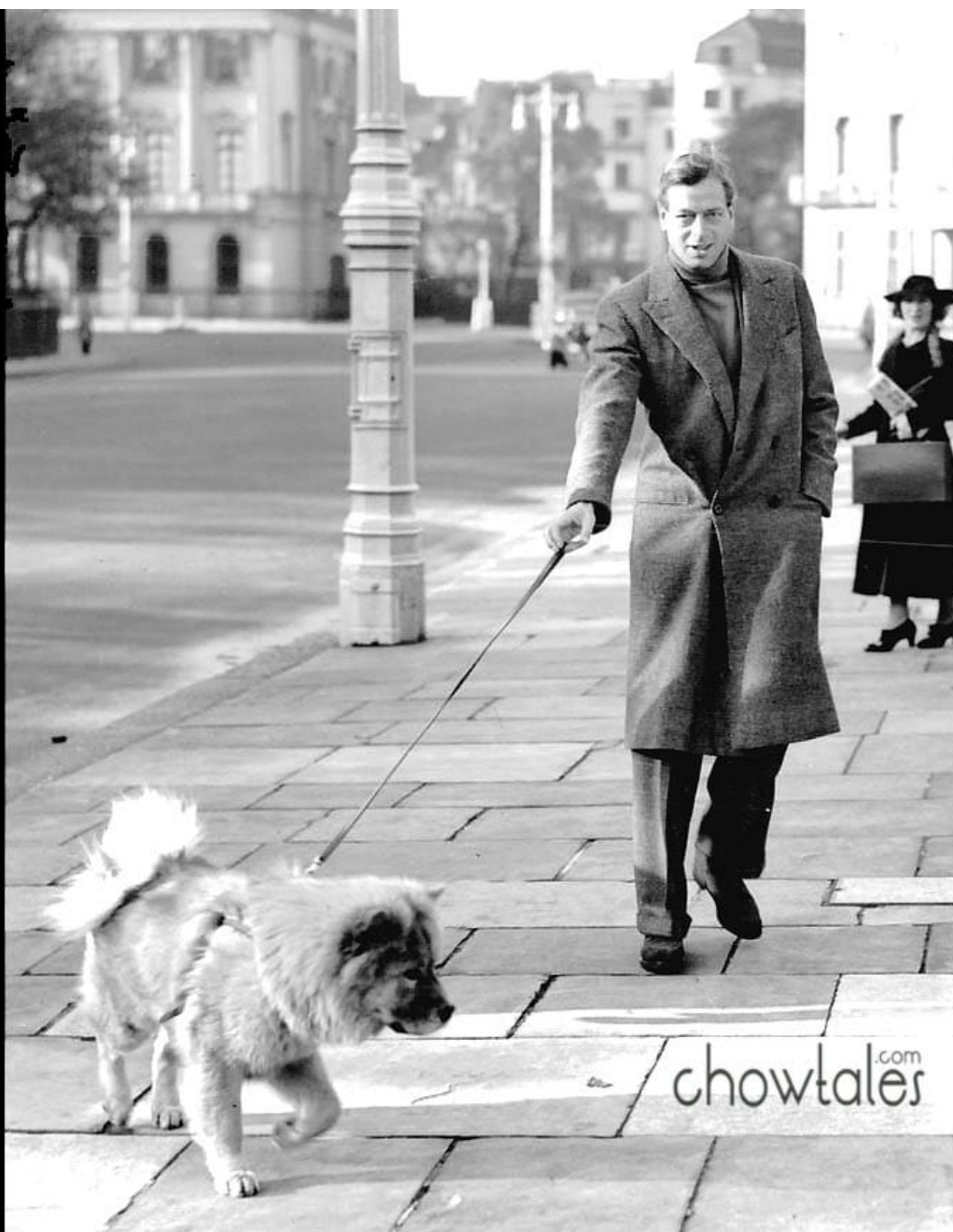
Circa 1938

Duke of Kent
on the streets
of London
with the family
chow "Mouff"
or "Muff"

This handsome
chow was
bred by the
famous
Choonam
Kennels of
England.

His registered
name....

Choonam
Li Wu Tsong



chowtales.com



Thomas Fall

From the book
ROYAL DOGS

Published 1955

Pictured is "Mouff",
a chow owned
by the Duke of
Kent, who was
photographed
by the legendary
canine photographer
Thomas Fall.

This paragraph
from the book is
an account of the
day this image
was created.....
such a chow!!

chowtales
chowtales.com

Shortly before the war the Duke of Kent added a Chow, one of the famous Choonam strain, to his kennel, and he became a great favourite with the little Princess Alexandra—to whom he was not "Choonam Li Wu T'song," as registered on his pedigree, but just plain "Muff"!

The Chow is supposed to be a "non-sporting" dog, but Muff soon showed that, given the opportunity, he could hunt with the best of them.

On the day when it had been arranged for him to have his photograph taken—the same photograph which appears on page 82—Muff vanished in the grounds of the Duke of Kent's estate at Coppins. When he did turn up to keep the appointment, his toilet had to be a lengthy one!