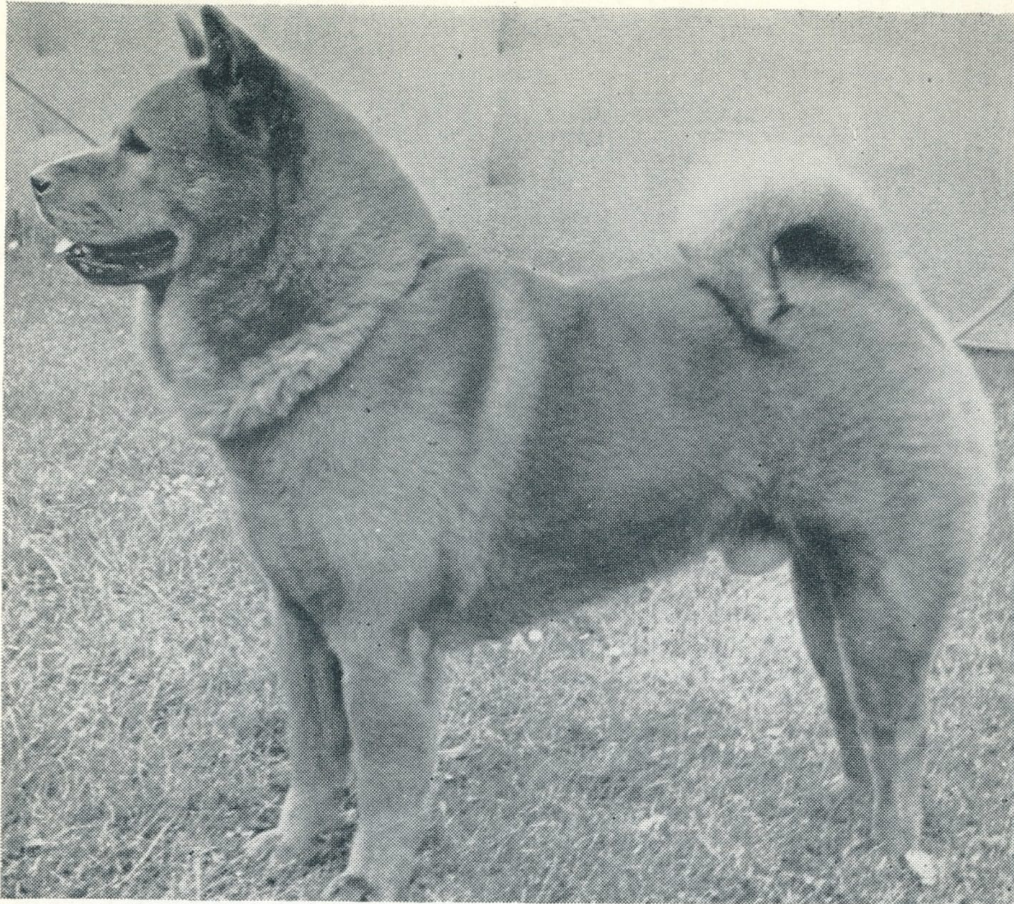


1945 Letter from E.A. Burrows /Penhow smooth chows to Mrs. Lucas



(VELDHUIS)

KIN KU OF PENHOW

A self-red Smooth Chow

Above: 1959 Book Plate- Collett- Kin Ku of Penhow – A typical high quality Penhow smooth

This amazing letter from E.A. Burrows of the famous English smooth chow kennel “Penhow”, was written to Mrs. Lucas who assembled the antique pedigree book mentioned in my [recent](#)

[article](#).. The 4 page letter below is filled with both additions and corrections to these rare handwritten pedigrees dating from 1905-1940's.

Take special note of the opening paragraph as well as the last paragraphs on the last page. Mr and Mrs Burrows had a vast knowledge of chow pedigrees and personally knew most of the famed trailblazers of our breed. These are fascinating first hand accounts and history we may have never known if it weren't for those who protected these records for well over 100 years..... and this just the tip of the iceberg. This letter led me to yet another outstanding find...an early chow history booklet by E.A. Burrows which you can find at [THIS LINK](#)

The 50+ page pedigree book and this letter were graciously donated to the ChowTales Archive by Pat Robb.

**To view the pedigrees Mr. Burrows refers to [CLICK HERE](#)
Each pedigree is numbered and corresponds with his notes**

If I come across anyone with a
bit of paper which they want to breed
I will bear you any in mind.

"PENBOW"
9, Richmond Rd.
Basingstoke.

25th. April, 1945.

Dear Mrs. Lucas

It was most kind of you to lend me your
book of pedigrees, which I now return. My records are so extensive
that it is difficult now to get anything fresh but your pedigrees
give me one or two useful additions, of which the most important
are the confirmation of suspicions that I had that SCEPTRE, the
great grandson of WYNHAM'S FAIRY QUEEN, belonged to Family 5,
which derives from the imported CHINA (This eliminates Family 14)
and that SHEILA OF THE EAST, given in the registrations as the
dam of BANG FROID, was the same as SHEILA OF KULDANAS, who belongs
to Family 19, which starts with the mysterious BUSY. I am afraid
we shall never solve the problem of BUSY'S breeding. I could not
get it out of her owner, Mrs. Sackville Golden. Nor was I able
to get any information about Hildeswell Rinkie's dam from Mrs. Moore.

You might be glad to have the following corrections and additions
to your pedigrees:

1. Pedigree of SU SU:

CH. CHOW VIII and CH. BONGIATUE (not Bodharie) were imported
and, so far as I am aware CYMBE, POON BAH and PRINCE KUNG, who
were all of unknown pedigree, were also imported.

EMPEROR OF CHINA was by the imported CHINESE AMBASSADOR ex
MARGUERITE, founder of Family 1.

2. Pedigree of CHING:

The dam of CHIMER was YUNG YUNG. This applies also to No. 3.

The sire of MINNIE (dam of FLOSS) was SENG. Brio.

There is something wrong with the dam of CHI CHI. There was
no CH. Wang Ehn, nor any Certificate winner of a similar name.

It is doubtful whether AH WOO was entitled to be called a
Champion. I cannot trace with certainty more than two certificates.

3. Pedigree of CHIMEN KWAI KWAI:

The dam of CARROT was MOURNA

CH. BONGIATUE (not BODHARIE). This also applies to No. 35.

4. Pedigree of CHEN:

DODLEY PRINCE was of unknown pedigree, presumably imported.

5. Pedigree of KO KO:

The dam of KO KO was KO KO.

The sire of KO KO was KO KO.

The dam of KO KO was KO KO.

6. Pedigree of KO KO:

The dam of KO KO was KO KO.

The sire of KO KO was KO KO.

The dam of KO KO was KO KO.

The sire of KO KO was KO KO.

The dam of KO KO was KO KO.

7. Pedigree of KO KO:

The dam of KO KO was KO KO.

The sire of KO KO was KO KO.

The dam of KO KO was KO KO.

The sire of KO KO was KO KO.

10. Pedigree of CHINK :
 The dam of SYNGE always appears in K.G. and Stud Book as MRS. AH (not Ad) HOK. She was by SINGAPORE BOY ex HOANG HO. This also applies to Nos. 14,15,17 and 38.
 The sire of MR. BOOMERLEY was KOW TOW. This applies to No. 15.
 PETER THE GREAT was an American, not an English, Champion.
11. Pedigree of ASHVALE CHING LING:
 THE GREAT SMUT was an American, not an American Champion. This applies to Nos. 13,14,16,17,18,19,20,22,23,26,27 & 28.
 The dam of RED PRINCE was BLACK PRINCESS.
 The dam of PECKNALL SAH RAH was MAH GYE OF CATTERICK. This also applies to No. 13.
12. Pedigree of CHUMEE:
 The dam of HILDEWELL TAO MU was DUCHESSE
 The sire of HILDEWELL LU LU was CHIN WAG. this applies to No. 1.
 The dam of FURBELOW was HASU.
 The sire of MR. BOOMERLEY and of CHUNG CHUNG was KOW TOW. This applies to No. 13.
 The sire of CENTRAL BOY was CHUNG WANG.
 I think there must be a generation missing in the tail female and that SCEPTRE was by SAM ex WILDFLOWER (by SWEEP ex LORRIE).
13. Pedigree of ASHVALE TSINNER:
 The sire of PECKNALL CHINK was HILDEWELL CHUNG.
14. Pedigree of WOO TI OF ELMET: no further comments.
15. Pedigree of RED PETE:
 The dam of PADDY was PATOO II .
 I believe that the sire of BEECH LING should be LING TING and his dam should probably be CHOC CHOC. This applies to No. 34.
16. Pedigree of CREAM SANI:
 The dam of RUSHFORD CHANG was RUSHFORD CHU CHIN.
 BLUE VEIN was by CH. PRINCE'S DOUBLE ex CHINA BLUE.
 The dam of SNOWBALL was AH LING. This also applies to No. 20.
 The dam of WYNDHAM'S TAT was HILDEWELL BINKIE.
 The sire of WYNDHAM'S TAT was NINOS TODOS. This applies to Nos. 20,22,23,26,27 & 28.
 According to the K.G. and STUD BOOK the dam of HILDEWELL BINKIE was DUCHESSE (an unregistered bitch and not, of course, the same as the dam of CH. RED CRAZE). This applies to No. 20.
 The sire of MR. NIG NIG was MR. DONKER.
 The dam of TEDDY BEAR was MALEZA. This also applies to No. 20.
17. Pedigree of SCA-LU CHU :
 According to the K.G. and Stud Book, the sire was registered as SU T'SUN OF FIVE ASH. He was an American, but not an English Champion, having won only two Challenge Certificates. This also applies to Nos. 19,25 & 33.
 The sire of MAGNUS was HAN OF RAHULL. This applies to Nos. 19,24,25 & 33.
 The sire of HAN OF RAHULL was BLUE BLOOD OF AMWELL. This also applies to No. 33.
 The dam of HAN OF RAHULL was TAI TAI. Ditto.
 The dam of ARR SYD was T'SING-TAU. Ditto.
 According to the K.G. and Stud Book, the sire of WYNDHAM'S TUT TUT was KWONG. This also applies to No. 33.
18. Litter by TODDIE OF KANG SHI ex CHINA CHIN CHIN) no further
19. Litter by TODDIE OF KANG SHI ex SCA-LU CHU) comments.

20. Pedigree of ROCHOW CHOSETTE :
 MOORWOOD PRINCE was by CH.SINBAD ex MOORWOOD SARA.
 The sire of CH.GENGHIS KHAN was registered as PUJA (not Pujap Pujā). This also applies to Nos.22,23,26,27 & 28.
 The dam of CH.AKBAR was CH.CHEFOO and her dam was FERMOSA NAN-CHE. This applies to Nos.22,23,24,26,27,28 & 29.
 The dam of BLUE BOY OF AMWELL was BETTI WANGA.
 The sire of KEYSOE OF BARNET was MR.KONG) This applies to Nos.
 The dam of KEYSOE OF BARNET was DOLIN) 22,23,26,27 & 28.
 The dam of MR.KONG was BESSIE BUNKIN.
21. Litter by CHING SUN TEE ex CHINK :
 The dam of CHOONAM LI WING HONG was CHOONAM SEN YEN.
 The sire of SANG FROID was GENERAL KWANG SU. He was not an English Champion but became an American Champion as GREENACRE GENERAL KWANG SU. This also applies to No. 32.
 The dam of SANG FROID was SHEILA OF KULDANA .
22. Pedigree of ROCHOW THISBE :
 The sire of TA TING was WAFFLES.
 The sire of PIC-I-NIE was KU TUNG . This applies to Nos. 25 & 26
 The dam of THE GREAT SMUT was SNOWBALL. This applies to Nos. 23,26,27 & 28.
23. Litter by ROCHOW BUCKLE ex ROCHOW CHOSETTE :
 The sire of LONG ACRE NEPHOS was MAGNUS.
24. Litter by KALCOT KOON KAU ex CHINK :
 The dog should be KALCOT KOON KHAN.
25. Litter by ROCHOW MOONSTAR ex SCA-LU CHU :
 The sire of SINGH LO (who was registered as NANSU'S SINGH LO) was COUCHI ONE (by YUNG LU LI ex ARR SYD). This applies to Nos. 26 & 27.
 The ~~dam~~ of SINGH LO was PRESTWOOD JESS (by BLUE YANG CHU ex PRESTWOOD BESS). This applies to Nos. 26 & 27.
 The sire of Pagoda CHU-ANG was CH.HILDEWELL KWONG.
26. Litter by ROCHOW MOONSTAR ex ROCHOW CHOSETTE: no further comments.
27. Pedigree of ANNA MAY WONG :
 The dam of ROCHOW PHILETTE was TWE-DEE OF KANG SHI. This applies to No. 31.
 The parents of TWE-DEE OF KANG SHI were American CH.MOJI OF KANG SHI and American CH. BLUE PERIWINKLE OF KANG SHI.
28. Pedigree of CHING LING KAO :
 The sire of GREY DAWN OF FIVE ASH was SHAHZADAH. This applies to No.30.
 The sire of CHUNG CHUNG was UNOME (afterwards NEDNEPRAH UNOME). This applies to NO.30.
- Loose Pedigrees -
29. Pedigree of PUCK-A-PU :
 Ashvale Ningee became an American Champion as ASHVALE NINGEE OF CAR MAR.
 The sire of CHOONAM LI WING HONG was CHOONAM WONG TAI.
 The sire of CH.PUSA OF AMWELL was SHASI OF AMWELL.
 The dam of CH.PICKLES was HILDEWELL WOO HOW.
 The sire of BLUE LADY was BLUE PETER OF TIEN H'SIA.
 The dam of CHOONAM BLUE MIST was TOOKHES OF DENSTOW.
 The sire of GREY FRIAR OF SILVERTON (who became an American Champion) was BARON OF MANUKA.
 The dam of PATRICIA OF DENSTOW was BLACK CHOWDI OF FIVE ASH.

30. Pedigree of LIN KAO OF AMWELL:
The sire of WUSU NEGRO was PAGODA CHU-ANG.
31. ROCHOW BENEDICT: 32. CHING SUN TEE: and 33. SU T'SUN OF FIVE ASH
No further comments.
34. Pedigree of PETER OF ROWFORD :
The last generation is somewhat involved. It should read -
CH.FOO SHAN - Imported.
PATOO II, by SECOND CHOICE ex CHINESE YEHONALA,
DINA, by DESMOND (or CHINESE DESMOND) ex PUSHMINA,
RED PRINCE, by CHUNG WANG ex BLACK PRINCESS,
MINNIE, by SENG ex LORRIE.
RED PRINCE, by CHUNG WANG ex BLACK PRINCESS,
PAGODA (Possibly an Imported).
RED PRINCE, by CHUNG WANG ex BLACK PRINCESS.
CLOE CLOE (or CHOC CHOC), evidently by
CHUNG WANG ex KUNIONG.
BLUE COAT CHINAMAN, by PRINCE CHUN KULM ex YUM,
GOODY, presumably by CHING AUK ex RED LILLIAN.
KOW TOW, by RED PRINCE ex LENA.
POWDER PUFF, by SAM ex COCKEY.
HILDEWELL CHUNK, by CH.HILDEWELL CHU-ANG ex
HILDEWELL LU LU.
RED BELLE, by CH.HILDEWELL CHOW ex SEE SEE.
35. Pedigree of KHAN DO OF RAHULL :
KWEI was not a CHAMPION, not having won a Champion Class.
The dam of PUNK was NAN SI
The dam of MAID OF CHINA was CHINA'S PRIDE
TA TA was by CH.CHOW VIII ex LEYSWOOD KAMTI
The dam of DESMOND (CHINESE DESMOND) was MANX CAT
36. Pedigree of CH.RAGAVARNO - No further comment.
37. Pedigree not on a form :
The dam of BLUE BETTY was BENG TSU.
The sire of GABYS was CH.CHELSEA PENSIONER.
The dam of GABYS was CH.PAPOOSE.
The sire of KIM-BAK was CHUNG WANG.
The dam of KIM-BAK was MRS.AH HOK
38. Pedigree of MOOSHI - No comment.
39. Litter by HOKO ex CHINK :
BLUE BINA was by BLUE BOY OF AMWELL (by POYANG ex BETTI WANGA)
The ex BUBBLES (by BLUE BEAR ex HILDEWELL WOO HOW).
The dam of KEYSOE OF BARNET was DOLIN.

I was interested to hear you had been in Singapore. I was in China for two years and left, after the troubles, at the end of 1927, intending to get a job in Singapore, where I had introductions to Donaldson & Burkinshaw and Rhodyke & Davidson, but we were not allowed to land our Chow, HEI HSIUNG, who had gone out to China with us, so we went on to Ceylon, where we met a charming Chow lady, CHIQUITA OF CHENG TU, who later became ours, and thence to India where we stayed a year.

My wife and I have one Chow dog, a rather dark blue, bred by Mrs. Arthur Brown of Joe's Folly, Taplow, and one day older than the war. My mother lost her last Chow a few months ago at the age of 16. He was a son of Hei Hsiung and Chiquita of Cheng Tu, one of a litter we bred in India. We brought the parents and two of the puppies back to England and took them through the Quarantine, a dreary process.

Yours sincerely,

EA. Burns