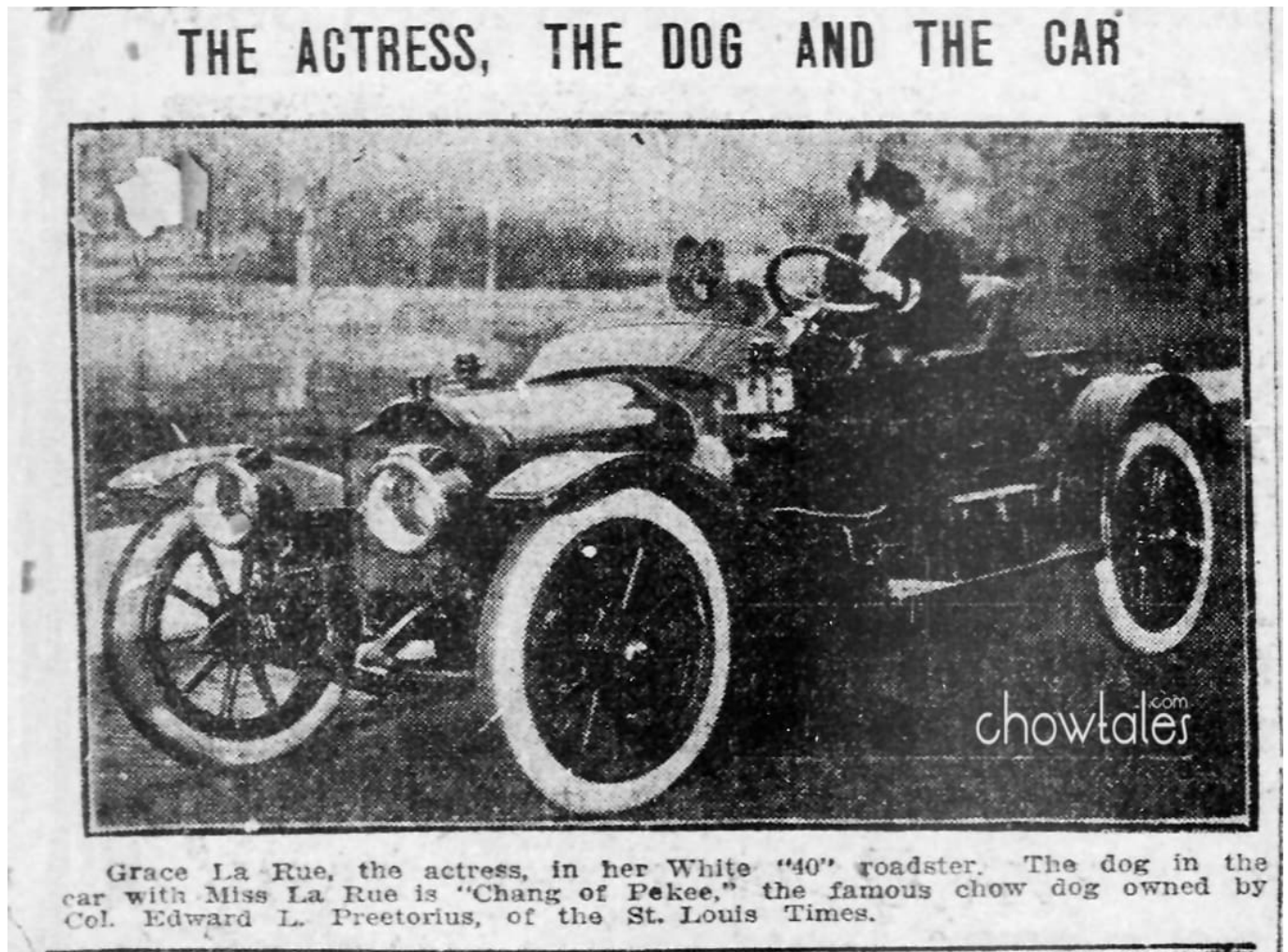


1912 Actress Grace La Rue with a chow in her roadster

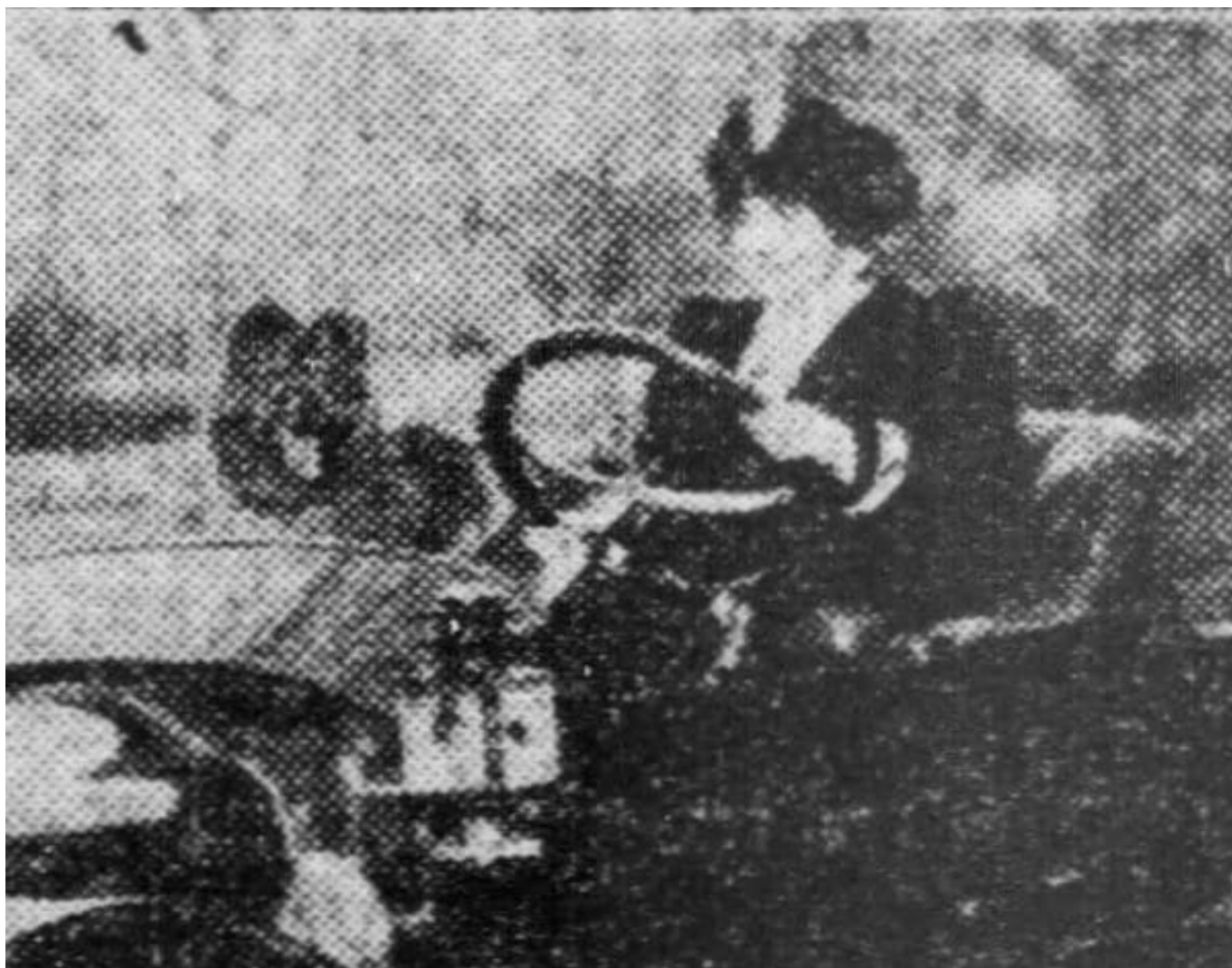
CIRCA 1912 - Actress Grace La Rue with Chang of Pekee



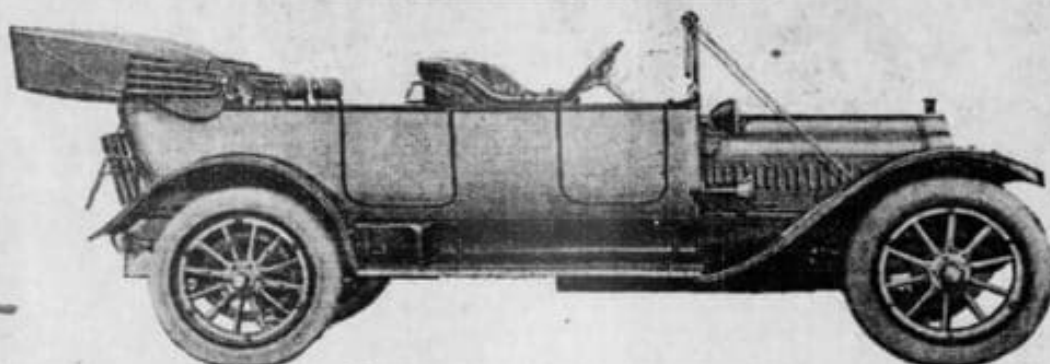
[UPDATE!! CHECK OUT THE PHOTOS I FOUND OF CHANG OF PEKOE AT THIS LINK](#)

This was an unexpected find in a 1912 newspaper, which was part of an ad for the WHITE SELF STARTING ROADSTER. Sitting pretty with a chow owned by Edward L. Pretorius of the St. Louis Times is vaudeville actress Grace La Rue!. Below I

cropped in closer to show a bit more detail. A beautiful photo of the actress is also below the ad.



WHITE CONSTRUCTION LEADS



THE WHITE SELF-STARTING SIX-CYLINDER GASOLINE CAR

THE "White Self-Starting Six-Cylinder Sixty" presents a striking contrast to the conventional types of six cylinder cars.

This car has been produced to meet the heretofore unfilled demand for a high-powered six-cylinder car that is both economical in operation and simple in construction and control.

The White Six embodies all of the principles of motor car design which the White Company has so thoroughly developed, and which have made White cars world-famous for economy, durability, and simplicity of operation and construction.

Absolutely the latest in every detail of body design, with lines unbroken by hinges and handles. The White Six is the only car to incorporate the entirely new but extremely convenient combination of the left-hand drive with a thoroughly practical and efficient electric starting and lighting system, *making it possible, for the first time in motor car construction, to reach the driving seat, start, and light the car without the necessity of stepping into the street.*

The striking simplicity in the design and construction of the White Six, with its long-stroke, cast-in-block motor, commands the admiration of all who see it, and the owner of a White car rests secure in the knowledge that it is absolutely the best and most advanced car produced in America.

SEE THE WHITE CARS AT THE SHOW

The White  Company

219 SOUTH BEATTY STREET AND DUQUESNE GARDEN



[SOURCE WIKIPEDIA:](#) Stella Grace La Rue was born in Kansas City, Missouri, in 1882 to Mrs. Lucy L. Parsons. La Rue was a stage name, more exotic than her original surname of Parsons.^[1] She began her career as part of the team Burke and La Rue, with her first husband Charles Burke. One of their numbers was a minstrel piece entitled "Grace La Rue and her Inky Dinks". She soon broke away from the act – and Burke – to appear in musical comedy.

La Rue performed in a number of productions on Broadway debuting in *The Tourists* in 1906. She also appeared in *The Blue Moon* (1906), *Molly May* (1910), *Betsy* (1911), and the 1907 and 1908 *Ziegfeld Follies*. In 1909, she married Byron (The Millionaire Kid) Chandler in Bennington, Vermont.^[2] The marriage broke up in 1914 when La Rue left the relationship, alleging that Chandler was unfaithful and that he beat her

La Rue made her debut as a Vaudeville single act in November 1912 at Poli's in Springfield, Missouri. As part of the act she sang an aria from *Madame Butterfly*, and a duet with a phonograph recording of Enrico Caruso. *Variety* gave her a good review commenting that the act gave La Rue the "opportunity to display her Parisian cultivated voice."