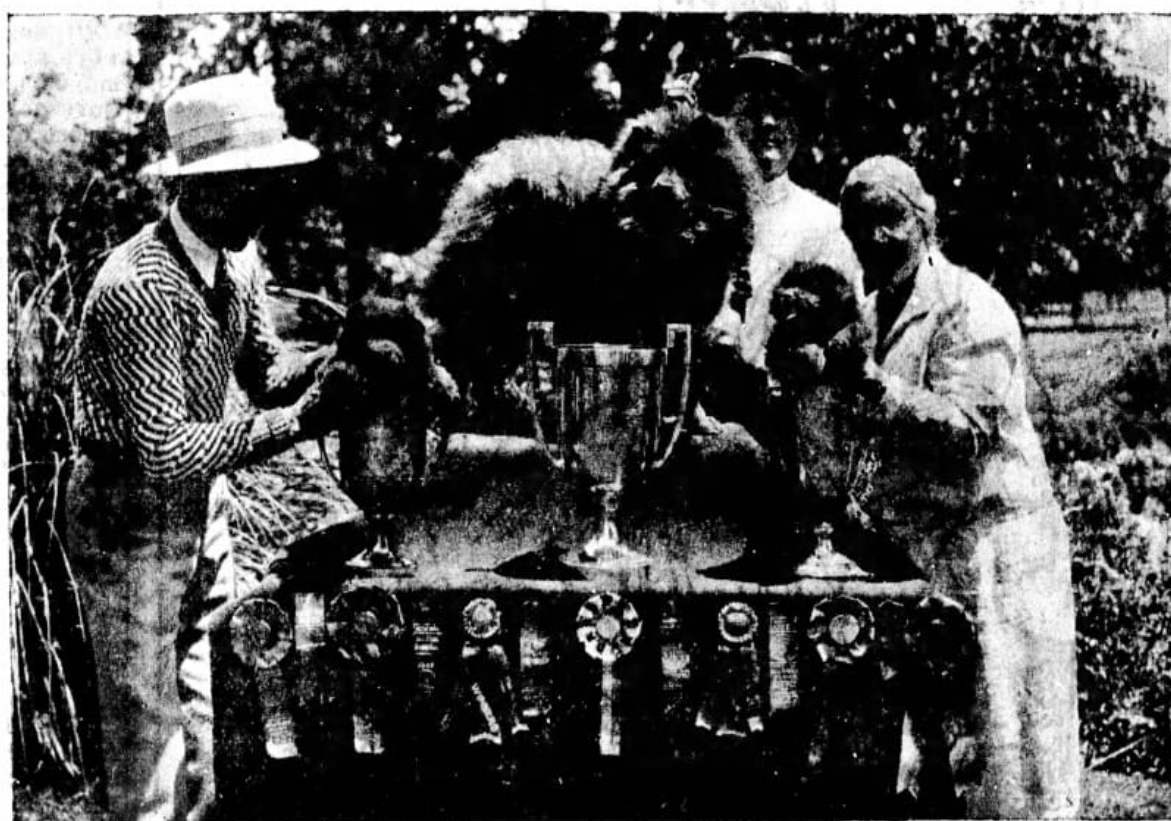


# 1906 Chicago White Sox Record holder Frank Isbell and his Best in Show Chow

## TROPHIES CAPTURED BY CHOW



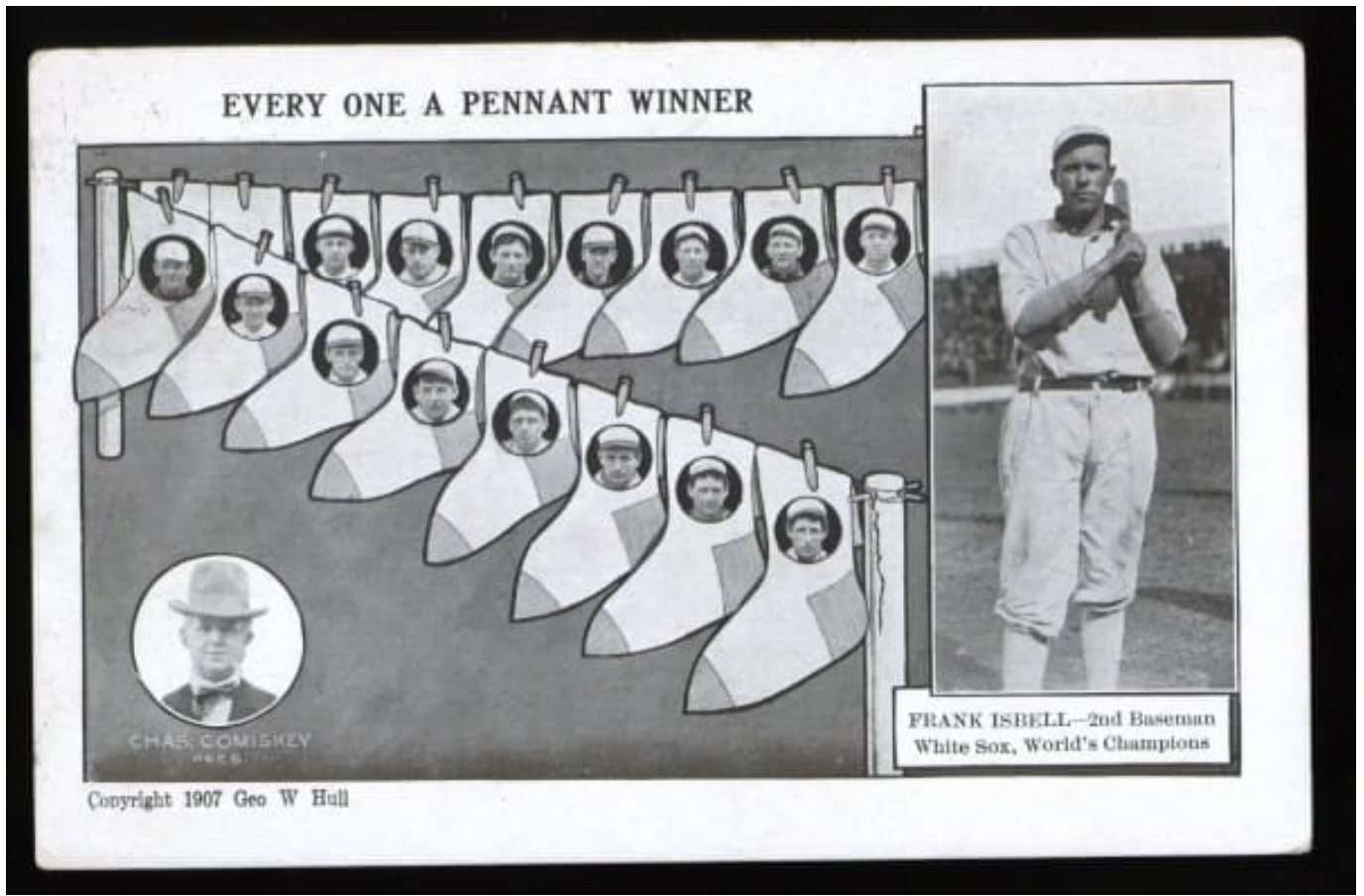
Mr. and Mrs. Frank Isbell and a few of their trophies captured by their winning chow, "Champion Yuan Chu of El Cheer." Mr. Isbell is the White Sox baseball player of 1906, who holds the world's record for hits. He is expected to enter his dogs in the coming dog show.

1928 BIS Ch. Yuan Chu of El Cher

Sire Ch. Ledgeland's Sancho...see photo of the famous Sancho below

I worked so hard to get this newspaper clipping above to give more detail. The original was almost totally black. The man behind the adult chow is baseball legend of the Chicago White Sox Frank Isbell who held the world's record for hits in 1906

(see bio below)



Frank Isbell's chow pictured, Ch. Yuan Chu of El Cher had done a lot of winning during the 1920's. This article is from 1928 when his chow had won a Best in Show. The other 2 people look to be holding chow puppies

# 5000 PEOPLE ATTEND BIG BENCH EXHIBIT

**Chow Chow Is Adjudged Best  
Dog At Peninsula Kennel Club Affair.**

The fourth annual bench show of the Peninsula Kennel club came to a glorious close at the Clark estate here yesterday after 5000 people had paid admissions to see the thoroughbreds on exhibition. Champion Yuan Chu of El Chert, a Chow Chow exhibited by Mr. and Mrs. Frank Isbell, was judged the best dog in the show and was awarded the big cup offered by Nion R. Tucker, president of the Peninsula Kennel club.

*FRANK ISBELL BIO – A prematurely bald, round-faced Irishman, Frank Isbell was a fixture of the Chicago White Sox for the*

first decade of their existence. Best remembered as the second baseman of the 1906 "Hitless Wonders," Isbell spent most of his career as a versatile utility player – one of the few men to have played all nine positions in the major leagues – before becoming a minor-league manager and magnate. As a young ballplayer, Isbell's acute sensitivity about his already receded hairline earned him the unappreciated nickname of "Bald Eagle." [SOURCE](#)



ABOVE: CH. LEDGELAND'S SANCH0, THE  
SIRE OF YUAN CHU – WITH BREEDER  
MRS DAVID WAGSTAFF circa 1932





---

NOTE: The Isbell's sold their entire kennel to Mr. and Mrs. Frederick S. Krupp of California