

# 1949 'OUR DOGS' CHRISTMAS ISSUE

AN ALL BREED PUBLICATION FROM ENGLAND FEATURING CHOW BREEDERS, CLUBS, AND WINNERS

270

OUR DOGS Christmas Number, 1949

Hon. Treas.: Mrs. E. M. Jones,  
71, Old Dover Road, Canterbury.  
Tel.: Canterbury 79.

President: Miss C. M. BAKER

## The Chow

### MELCHUNG Chow Chows Mr. M. A. NEWMAN

86 Baker Street, Potters Bar, Middlesex

Phone: Potters Bar 3555



**T'SIN-NING OF KIN-SHAN**  
Sire: Commandant of T'sun-Choo. Dam: Sou Sing Eveon. Fu'l brother to the two post-war champions—previous litter—Ch. T'sai-Ting of Kin-Shan, Ch. Chang-T'sao of Kin-Shan



Photo, Sport and General.

**RANSOM OF BRINCHOW**  
Sire: Columba of Padua. Dam: Ch. Una-So-Sweet

ONE of our keenest Chow-ists, Mr Newman, is steadily forging his way ahead. There can be few kennels that are so well laid out. The dogs are kept in lovely bloom and condition, and under veterinary supervision.

This year has been a very successful one, and all dogs and bitches have been continually winning up and down the



Photo, Westwood and Nodes, London, N.W.9.  
Showing part of the very beautiful surroundings of the MELCHUNG Kennels

country in breed and variety classes.

All enquiries will receive prompt attention from Mr. Newman, both for stud services to approved bitches, and enquiries for puppies when available from Una of Brinchow and the attractive blue, Mairim Blue-Chuzi.

Puppies usually for sale.

G. M.



**UNA OF BRINCHOW**  
Sire: Ch. T'sai-Ting of Kin-Shan. Dam: Ch. Una-So-Sweet



**MAIRIM BLUE-CHUZI**  
Sire: Cho-Sen-Blue. Dam: Ch. Mitzi of Gaywood



## THE CHOW CHOW CLUB—continued.

## COTHAM CHOW CHOWS

Mrs. GOUGH

Hicks Gate, Keynsham, near Bristol

'Phone: KEYNSHAM 3384



CHOONAM KAI TOW

THE star of this kennel, where one can still obtain stock of pure Choonam breeding, is undoubtedly **Choonam Kai Tow**. Himself a big winner on the few occasions shown, he is the sire of a stream of winners, including one champion.

The well-known winner, **Cotham Clove Pink**, is now nursing a litter by Choonam Kai Tow, her grandsire, and puppies from this and other litters will be for sale when this review appears. For stud fees of Choonam Kai Tow, Cotham Fango and others, application should be made to Mrs. Gough.

G. M.

## LOUFAME Kennel of Chow Chows

Mrs. Lough, Halfways & Pretoria Farms  
Holme Road, Yaxley, Peterborough

'Phone: Yaxley 398



Photo, Peterborough Citizen and Advertiser.

TA-BU OF LOUFAME

THE Loufame kennel is not a big one, but Mrs. Lough, who prefers to restrict her numbers so that they get her personal attention, is beginning well. Her first venture in breeding was by taking her bitch, **Pansiao of Silverway** to Mrs. Ingleton's Ch. T'sai Ting of Kin-Shan. This litter produced some excellent puppies. **Ta-Bu of Loufame** has been shown fearlessly, and has won under both specialist and all-round judges. In the near future a bitch from this litter will be making her debut.

Ta-Bu will be at stud early in 1950 to a few approved bitches. Fee on application to Mrs. Lough.

Puppies are sometimes for sale and inquiries will receive prompt attention.

G. M.

## NITRAM Chow Chows

Mrs. Martin, Aberdale, South Road,  
Newton Abbot, S. Devon



YAO OF KIN SHAN

Blue. Stud fee, 6 gns. Sire of champion-ship and open show winners

THE Nitram Chow Chows suffered a visitation of the dread hard pad disease at the end of 1948, and did not get back into the show ring until March 1949.

Some of the well-known Penmoor bitches have recently been taken over including **Chinky Redwillow** by Ransom of Padua out of Muff Tai. Another winning dog to join the stud is **Yung Tung**, grandson of Ch. Choonam Ho Tung.

Two Mairim puppies by Jo-san Hamlet out of Mairim Blue Jozi are expected to make their debut next spring.

Puppies out of Nitram bitches which are chiefly by Choonam ex Kin Shan breeding should be available by Christmas.

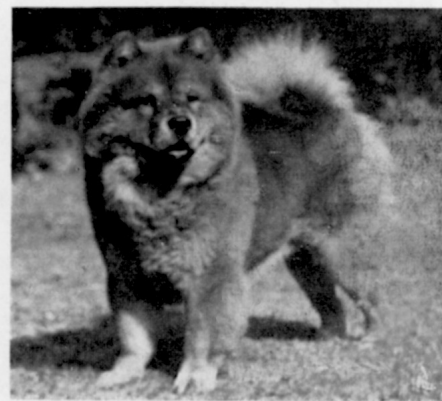
At stud to approved bitches is the blue dog Yao of Kin Shan. Fee, £6 6s.

## DARAYA CHOW CHOWS

Mrs. E. A. EDWARDS

The Cottage, Ongar Rd., Abridge, Essex

Telephone: Theydon Bois 2279.



Photo, A. Sparrow, Loughton.

JO-SAN LAERTES

AT stud, **Jo-San Laertes**, well-known son of Ch. Sabu. Upstanding red dog with small dark eyes. The dog to use to get the good legs and feet so rarely seen.

Also at stud **Yaroshi Ho-Yu of Taoting**, a fine self red winning dog. A grandson of Capchow San-Cho.

Fees and inquiries for puppies sired by Jo-San Laertes on application to owner.

## PENCISELY Chow Chows

Mr. and Mrs. R. D. Hosken

Stoneleigh, Brynawelon Road, Cyncoed  
Cardiff.

Tel.: Llanishen 1083

I HAVE always been very impressed by **Anselm of Padua**, a son of Ch. Li Wu Fah. This beautifully-balanced, well-boned dog is right up on toes and has excellent action fore and aft, a very nice head with square deep muzzle and excellent expression. It gave me very great pleasure in awarding him the reserve c.c.

**Su San of Pencisely**, a typical daughter of Anselm of Padua. Has done quite a lot of winning. Puppies from this bitch by Reuben of Padua are for sale.

Helen F. Geary.



ANSELM OF PADUA

## SITRUC Kennel of Chow Chows

Mrs. Curtis, 30, Kerry Street, Derby

'Phone: Derby 46985.



CH. SITRUC YUNG T'SUN

MRS. CURTIS paved the way to fame when she became the owner of **Sitruc Son of Smut**, that lovely black son of Blue Ching of Waldron, for from two litters sired by him she had first of all the red, Champion **Sitruc Yung T'sun**, and secondly the black, **Sitruc Smuts T'son**.

Ch. **Sitruc Yung T'sun's** wins are too many to enumerate but at the time of writing he has just had his most spectacular win; at Brighton after winning his sixth c.c. he went on to win the non-sporting group, and then was made best in show all breeds.

**Sitruc Smuts T'son** is also well known both as a winner and a sire of lovely blue and black puppies, and he is especially good with maiden bitches.

For stud fees of these two dogs application should be made to Mrs. Curtis.

G. M.



# Chow Club

Founded 1895

Hon. Sec.: Miss G. Morton,  
Kimbers, Plaistow, Billingham,  
Sussex. Tel.: Plaistow 52.

## The MAIRIM Kennel of Chow Chows

MRS. SIMPSON'S Chows are making a steady climb up the ladder of fame. They have been shown fearlessly at all the major shows, and I do not think they have ever been out of the money.



MAIRIM BLUE WOO TU



Photo, Leslie Kays, N.18.

### CH. MITZI OF GAYWOOD

Ch. Mitzi of Gaywood attained her third certificate this year at Chester. But Mitzi shines not only in the show ring, she has also proved an excellent brood bitch and her progeny are proving as big winners as she herself. One daughter, Mairim Blue Jozi, is also proving to be not only a winner but a producer of good stock. An outstanding litter of hers was the one which included the now famous Mairim Blue Woo Tu, winner of one certificate and two reserves, and the brothers Blue Yue Chung and Blue Lau T'sau. Chung has already won one reserve c.c. and many times he has been best of breed.

Another bitch beginning to make a name is Mairim Blue Chuzi, a daughter of Ch. Mitzi. She is now in the possession of Mr. Newman.

Mrs. Simpson showed unerring skill in picking the lovely red puppy, Mairim Chinky Miss, out of a litter sired by her winning red dog, Mairim Red Warrior. Chinky Miss has so far

**Mrs. Simpson**  
59, Albury Grove Road  
Cheshunt, Hertfordshire

Telephone: Waltham Cross 4512

had a spectacular show career, and won the reserve c.c. at Bournemouth under Mrs. A. Brown.

For dogs at stud and puppies (which are often for sale) an application to Mrs. Simpson will receive her personal attention. G. M.



Photos, Westwood and Nodes, London, N.W.9.

MAIRIM CHINKY MISS

**HAMPFIELD Chow Chows**  
Mr. G. Webster, 30, Stanley Avenue  
Ealing Road, Wembley, Middlesex

Telephone: Wembley 5953



HAMPFIELD BLUE YEN (K.C.S.B. 202 AF)  
Seven months

OWING to pressure of business Mr. Webster has had to curtail his show activities this year, but breeding on a small scale has kept his kennel going. Mr. Webster made his first appearance in the ring this year with his good black bitch, Princess of Hampfield, and both she and Hampfield Blue Yen did well. The latter is now offered, as a proved sire, at stud for the fee of £6 6s.

Also at stud is the red dog, Ho-Tung of Hampfield, a son of Ch. Choonam Ho-Tung, and the blue dog, Auster Blue Kang-Ti (blue bred for four generations). Fee for all the above is £6 6s. or by arrangement to approved bitches.

Puppies from Princess and other bitches should be for sale when this review appears. G. M.

**WEY-MERE Chow Chows**  
Good Guards and Wonderful Companions

Mrs. F. G. Watts, 23, Hendham Road  
Wandsworth Common, London, S.W.17

Telephone: Balham 3595



Photo, Thos. Fall.

### Now at Stud—WOO MUH OF WEY-MERE

(Blue Hue of Wey-Mere ex Princess Quetta), outstanding black of the correct size. Small deep-set eye, well placed ears, perfect legs and feet. At two first shows won five firsts and diploma for best in breed.

PUPPIES USUALLY FOR SALE.



President: Miss E. M. BUCKLEY.

Chairman: Mr. P. J. W. BIRD.

**The Midland****Adel  
CHOW-CHOWS**

**S**TILL one of the biggest establishments in the breed, the Adel kennel houses at present what is perhaps the strongest team of stud dogs it has ever mustered in the whole of its history.

**Choonam Fang Weng**, bred by that great Choonam expert, the late Mrs. V. A. M. Mannooch, by Ch. Choonam Fang Yin ex Ch. Choonam Kwong Che, represents the cream of that famous kennel's breeding. Note



Photos, Wyant, Birmingham.

**MAN-DA-RIN OF ADEL****Head Study: CHOONAM FANG WENG**

the quality of his head, the strength of muzzle, the small, tilted ears and the expression generally. A beautifully-shaped, medium-sized dog of superlative breeding and of an outstanding quality, such as is too seldom seen, he is now at stud in a kennel of easy access to all, and I can strongly recommend him as a stud proposition to all who desire true Chow type and quality in their stock, for he is siring first-class puppies. He gained a first at Leicester ch. show, his only outing this year.

The deep red, c.c. winner, **Man-Da-Rin of Adel**, best of breed at the National Dog Show, Birmingham, in February, 1949, he also won the same honour at the recent L.K.A. show (November, 1949), and many times reserve for the c.c. is a strong, masculine type, siring large litters of a quality to be expected from a sire of his stamp.

The winning black, **Ken-Dee of Adel**, another home-bred, is a grandson of Minos of Adel and a descendant of such famous Chows as Ch. You-Si, Ch. Li Wu Fah and Ch. Peach of Silverway, etc.

Others in the kennel include that grand little reserve

**Miss E. M. BUCKLEY  
WATERLOO HILL  
STRATFORD-ON-AVON**

Telephone: STRATFORD-ON-AVON 2711.

c.c. winner, **Hishan Solly** and **Lee Wong of Adel**, a light red son of Ch. Choonam Mong Yen and a descendant of Ch. Choonam Mei Su Tang and Ch. Akbar on his dam's side, as well as blacks, blues and reds too numerous to mention here, all of which are at stud to approved bitches. Fee on application.

Puppies and young stock are usually available from well-bred bitches. **A. O. Grindey.**

**KEN-DEE OF ADEL****Of Hanoi Chow-Chows****Mrs. D. L. SMITH****112, CLIVEDEN AVENUE, PERRY BARR, BIRMINGHAM, 22B**

Telephone: Birchfields 5515

**O**UR illustration is of **Ki-Pung of Hanoi**, home-bred, shaded red son of Wong Ty of Rivaway, who carries much of the breeding upon which the post-war success of the famous Silverway kennel has been founded, namely, that of Ch. Choonam Mong Yen and Wong of Silverway, the latter himself a winner of one c.c. and two reserve c.c.s and litter brother of that notable brood, Ch. Peach of Silverway, ex a daughter of Tide of Redstone, who combines the breeding of such famous Chows as Ch. Choonam Ho Tung, Layo Wu and Wendy Sen Yen.

I am content to let the picture speak for itself as proof of the quality of the present-day products of this go-ahead kennel; sufficient to say that Ki-Pung is

**KI-PUNG OF HANOI**

litter brother of **Ts'ao of Hanoi**, the sensational puppy who qualified for his Junior Warrant on the day he was 10 months old, and is, in the opinion of numerous judges, his superior in many respects. Both Ki-Pung and Ts'ao are proved sires.

Other stud dogs are the c.c. winner, **Brutus of Ho-Ping**, a deep self-red, and his son, the home-bred, winning, black, **Liu Cho of Hanoi**, who is such a favourite with those who demand a medium-sized, well-balanced animal.

Stud fees on application.

Puppies from well-bred bitches by the above dogs and other leading sires are available from time to time at reasonable prices.

**A. O. Grindey.**